



Welcome

Resource Management Plans Public Information Meeting



octa.net/rmp



octa_rmp_comments@octa.net





YOUR FEEDBACK IS IMPORTANT



This meeting is an opportunity to learn and provide feedback on the Resource Management Plans (RMPs) as part of the Measure M2 Freeway Environmental Mitigation Program. The RMPs provide guidance for the ongoing protection, preservation, and adaptive management of OCTA's wilderness preserves in the Trabuco and Silverado Canyon areas.

HOW TO COMMENT BY FEB. 8, 2016

- Online: www.octa.net/rmp
- Mail: Dan Phu, OCTA, Attn: M2 RMP, PO BOX 14184, Orange, CA 92863-1584

QUESTIONS?

- Watch Presentation
- Review Display Boards
- Talk to Staff





M2 FREEWAY ENVIRONMENTAL MITIGATION PROGRAM



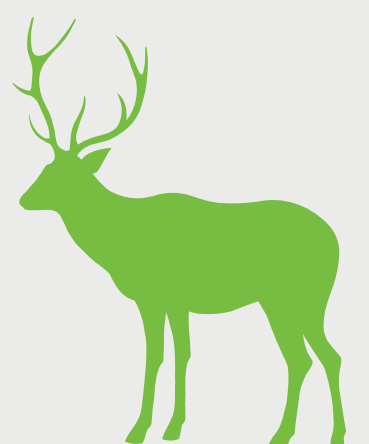
The program allocates funds to acquire open space properties and contributes to habitat restoration projects in exchange for streamlined project approvals for 13 Measure M2 freeway improvement projects.



With allocated funds, OCTA acquired approximately 1300 acres of land in the Brea, Laguna Beach, Silverado Canyon, and Trabuco Canyon areas to preserve as permanent conservation lands.



Eleven restoration projects are currently funded throughout Orange County. Funds will aid in removing invasive plant species and restoring approximately 400 acres of open space lands to its native habitat.



These Preserves were selected to expand wildlife connectivity, protect sensitive species, and preserve substantial parcels of valuable habitat.



The OCTA Conservation Plan will be finalized in 2016, which is a state and federal document to protect threatened and endangered species. Preserves that possess habitat and important wildlife species that are similar to those affected by the construction of the M2 freeway have been purchased by OCTA and are included in the Conservation Plan.



In accordance with the goals and objectives of the Conservation Plan, the Resource Management Plans are required in order to provide guidelines for the management and monitoring of the Preserves.



RESOURCE MANAGEMENT PLANS (RMP)



Draft Resource Management Plans (RMPs) have been developed to guide the stewardship and operations of each Preserve while meeting the commitments of the Conservation Plan. The RMPs include how sensitive plants and animals are protected and maintained, as well as what, where, and when public access is allowed for each Preserve.

The state and federal wildlife agencies require the development of the RMPs and will ultimately approve them. These plans are reviewed and amended as necessary (typically every five years).

THE RMPs INCLUDE:

- Preserve resources and applicable Conservation Plan goals and objectives
- Permitted activities and threats to the Preserve (hiking vs. hunting)
- Vegetation management (maintain access roads)
- Fire prevention (Preserve closures during red flag warnings)
- Property management (fencing and protection of resources)
- Public access opportunities
- Public education/outreach
- Biological monitoring and management
- Financial commitment



MANAGEMENT AND PUBLIC ACCESS ON PRESERVES

RECREATION

The primary purpose of acquiring the Preserves is to meet the biological requirements of the Conservation Plan. The M2 Environmental Mitigation Program will provide additional benefits, such as opportunities for passive recreation.

Activities within the Preserves should be compatible with the protection of the biological resources. The location, type, seasonal timing, and frequency of activities in the Preserves will be modified to minimize impacts. If permissible by state/federal wildlife agencies, recreational opportunities will occur on designated, pre-existing access roads.

ALLOWED ACTIVITIES

Passive recreation and limited access may be allowed during daytime hours. Some activities may include:

- Preserve management access
- Walking
- Jogging
- Hiking
- Limited mountain biking
- Equestrian use
- Restoration/enhancement of native vegetation

PROHIBITED ACTIVITIES

- Night time recreation
- Shooting, target practice, hunting, paintball
- Off-road vehicle use
- Dog walking, whether leashed or unleashed
- Development involving the construction of buildings, parking lots, or other structures
- Agricultural uses
- Active recreation or any activity that negatively affects natural vegetation or wildlife habitat values
- Camping
- Mining activities
- Landfills
- Brush control or fuel management, except where identified within the RMPs



PUBLIC ACCESS PROCESS AND OPPORTUNITIES

MANAGED PUBLIC ACCESS

- A public access framework has been developed to define managed access options.
- Managed access may include limits on dates, times, purpose, and frequency of access, including some degree of supervision.
- Adhere to the M2 Environmental Mitigation Program objectives while providing limited public access opportunities as an added benefit.
- Access should be consistent with the constraints of protecting habitat and sensitive species on each Preserve.

PUBLIC ACCESS FRAMEWORK

The public access framework outlines various types of access opportunities.

PROPOSED PUBLIC ACCESS

- Docent-led hiking and riding days
- Self-managed community partnership public access program

FUTURE PUBLIC ACCESS OPTIONS

- Permit system
- Open access days
- Reduced public access

FRAMEWORK CONSIDERATIONS

The condition of the Preserves will dictate any increased/decreased access on an ongoing basis. Public access is scalable and will be actively managed depending upon circumstances and status of resource protection, observed impacts, and compatibility of different user groups.

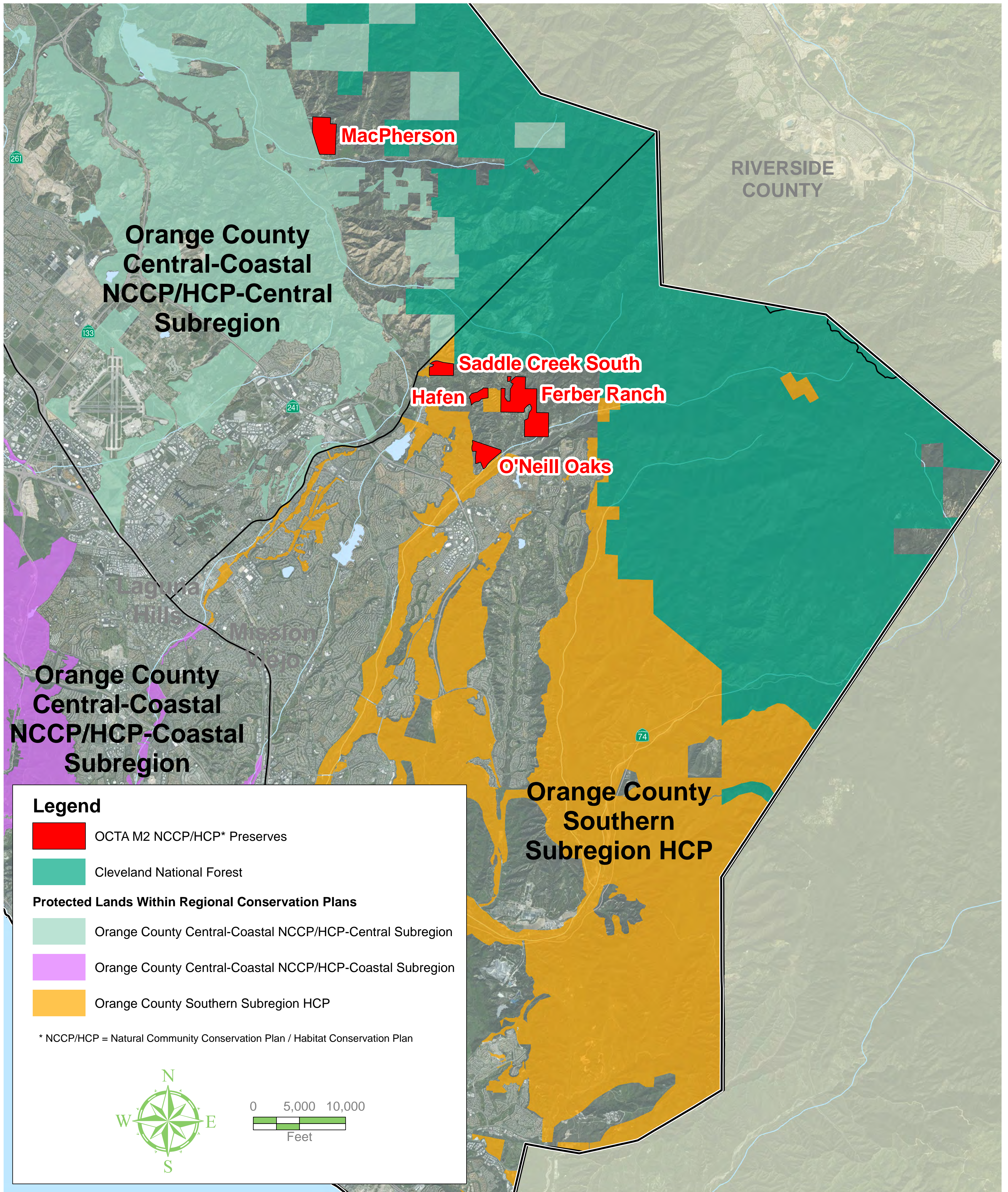
Some Preserves may have very limited public access due to high habitat value, safety concerns, lack of trails or trail connections, or conflicts with surrounding land uses.

Enforcement of unpermitted access is aimed at education and redirection of the activity to an appropriate location.

Repeated violation of access rules may result in fines and restricted public access or closures until resource protection can be assured.



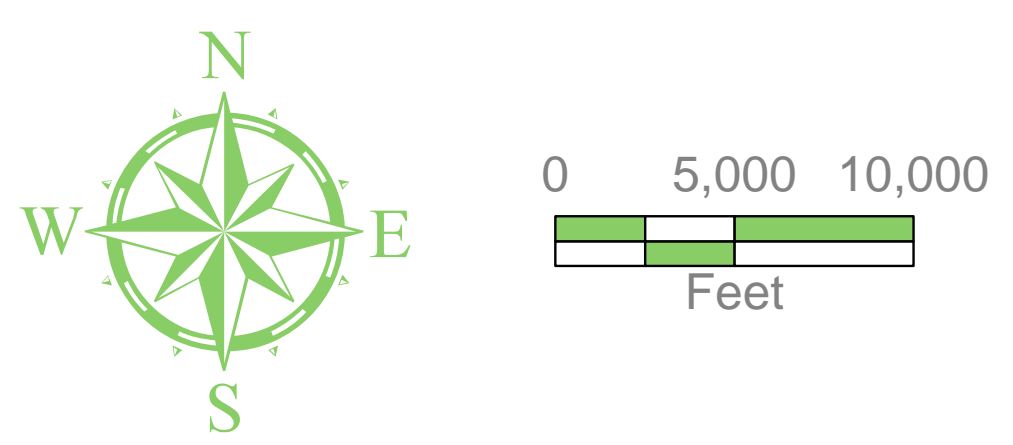
OCTA PRESERVES RELATED TO OTHER CONSERVATION EFFORTS

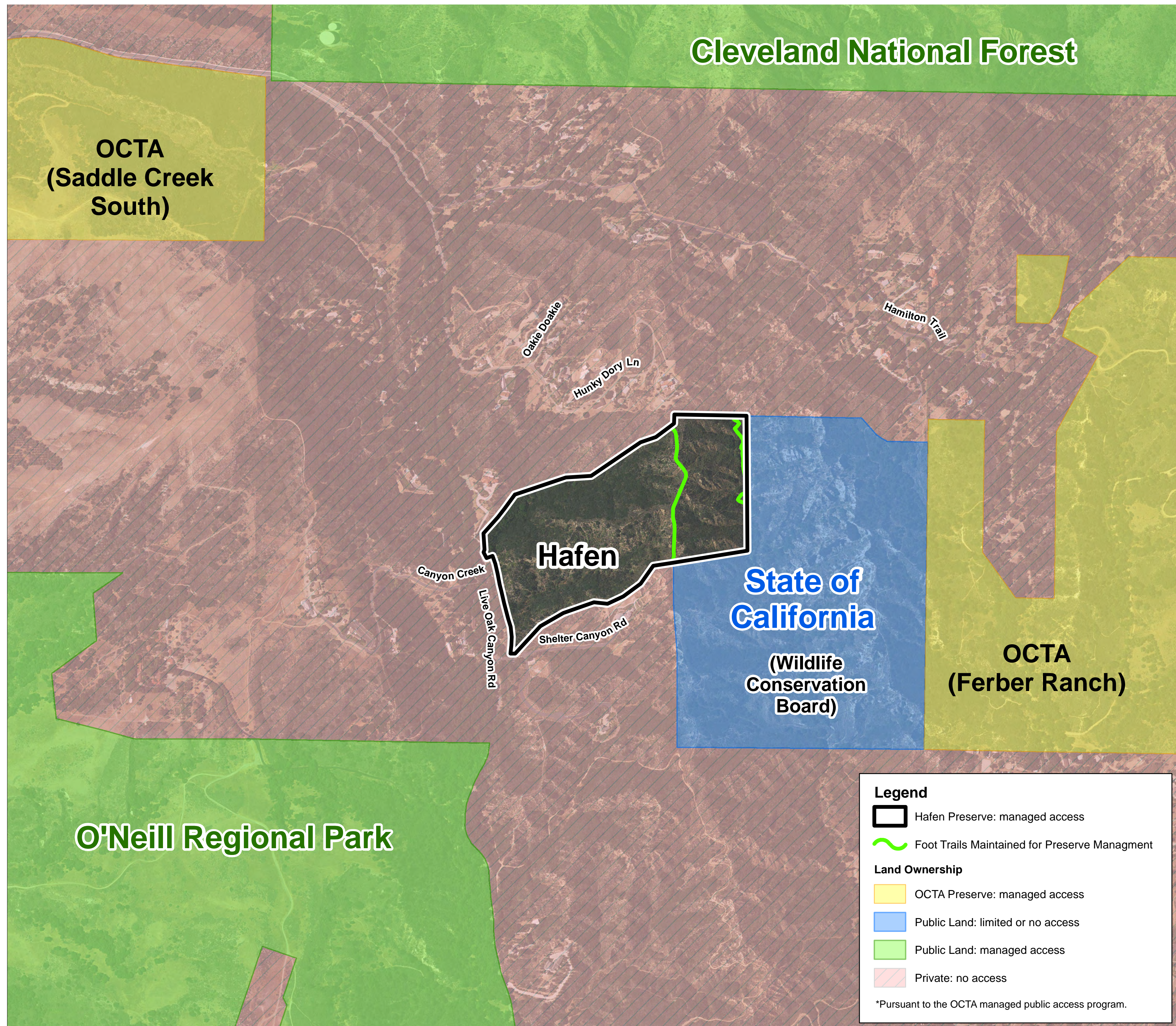


Legend

- OCTA M2 NCCP/HCP* Preserves
- Cleveland National Forest
- Protected Lands Within Regional Conservation Plans**
- Orange County Central-Coastal NCCP/HCP-Central Subregion
- Orange County Central-Coastal NCCP/HCP-Coastal Subregion
- Orange County Southern Subregion HCP

* NCCP/HCP = Natural Community Conservation Plan / Habitat Conservation Plan





RMP HIGHLIGHTS

SENSITIVE SPECIES

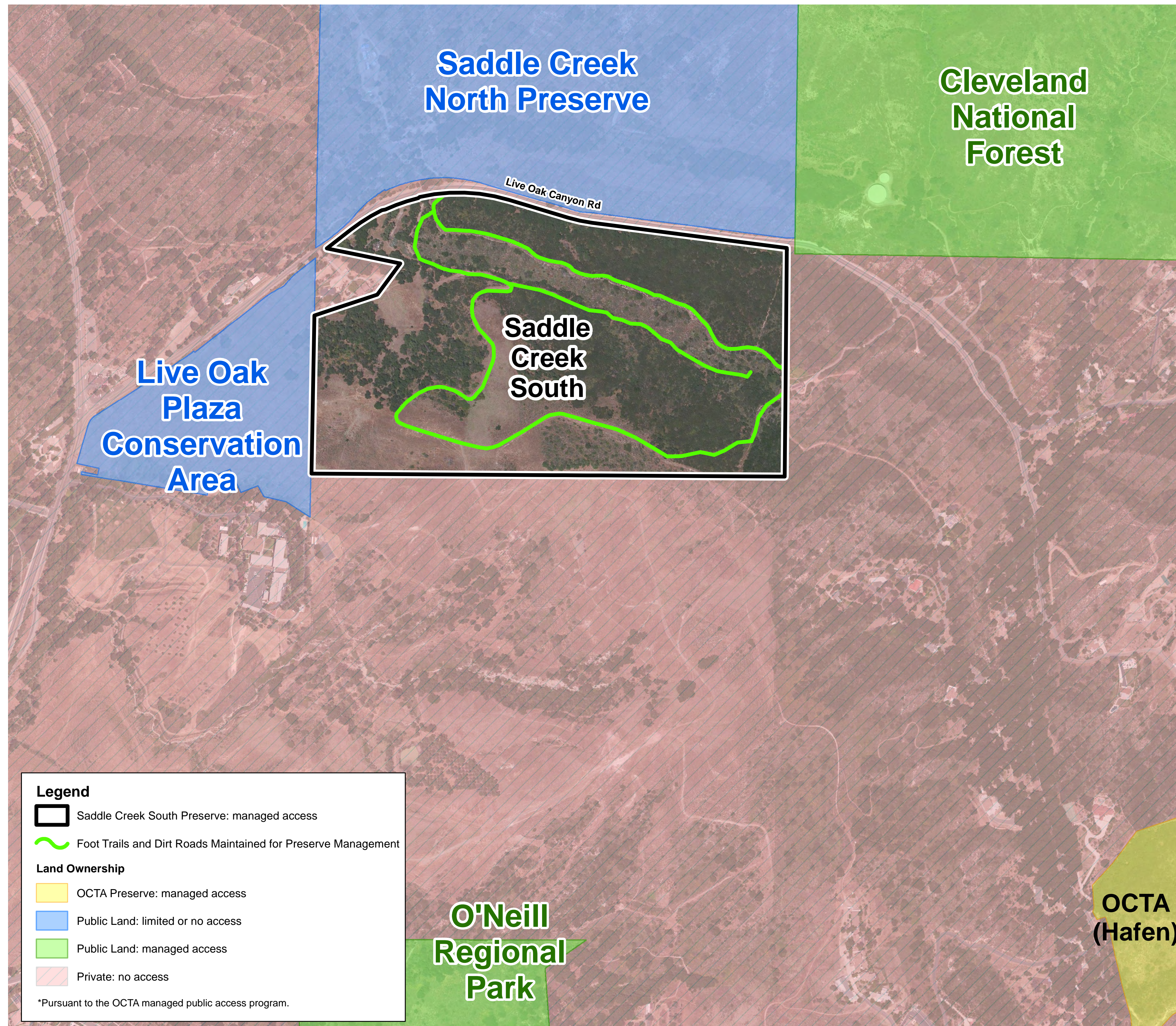
- Intermediate Mariposa Lily, Cactus Wren, and Coastal California Gnatcatcher

CURRENT/FUTURE PROPOSED PUBLIC ACCESS

- No access due to site constraints and safety concerns

PUBLIC ACCESS CHALLENGES

- Surrounded by properties that limit or don't allow public access
- No existing roads on Preserve
- Rural roads with limited vehicle capacity
- No staging areas (parking/restroom facilities)



RMP HIGHLIGHTS

SENSITIVE SPECIES

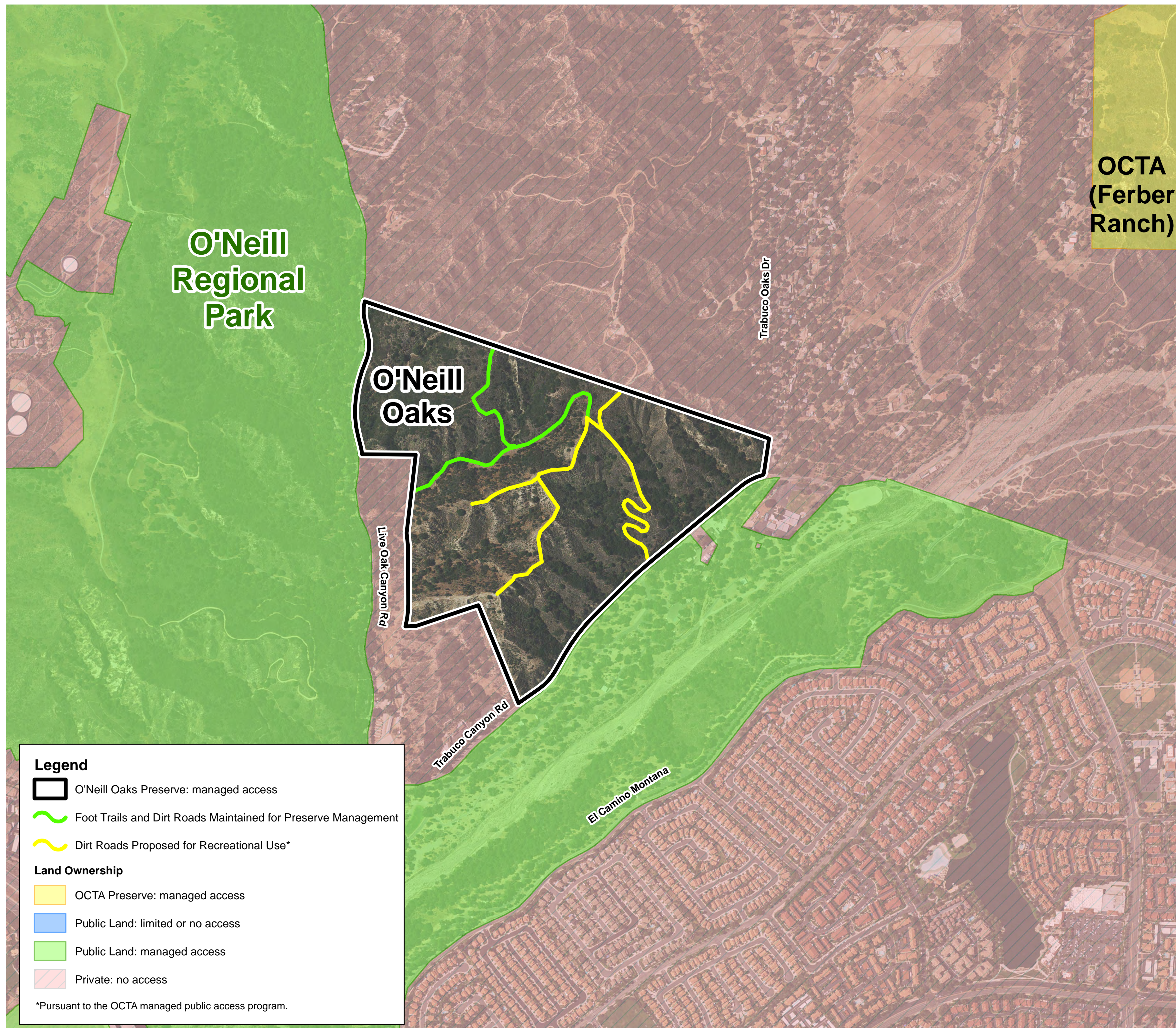
- Intermediate Mariposa Lily, Cactus Wren, and Coastal California Gnatcatcher

CURRENT/FUTURE PROPOSED PUBLIC ACCESS

- Small scale public event(s) with the cooperation of adjacent land owners for staging

PUBLIC ACCESS CHALLENGES

- Surrounded by properties that limit or don't allow public access
- Rural roads with limited vehicle capacity
- Small pull-out area off of busy Live Oak Canyon Road
- Lack of staging areas (parking/restroom facilities)



RMP HIGHLIGHTS

SENSITIVE SPECIES

- Intermediate Mariposa Lily, Coastal California Gnatcatcher, Cactus Wren and Orangethroat Whiptail

PROPOSED PUBLIC ACCESS

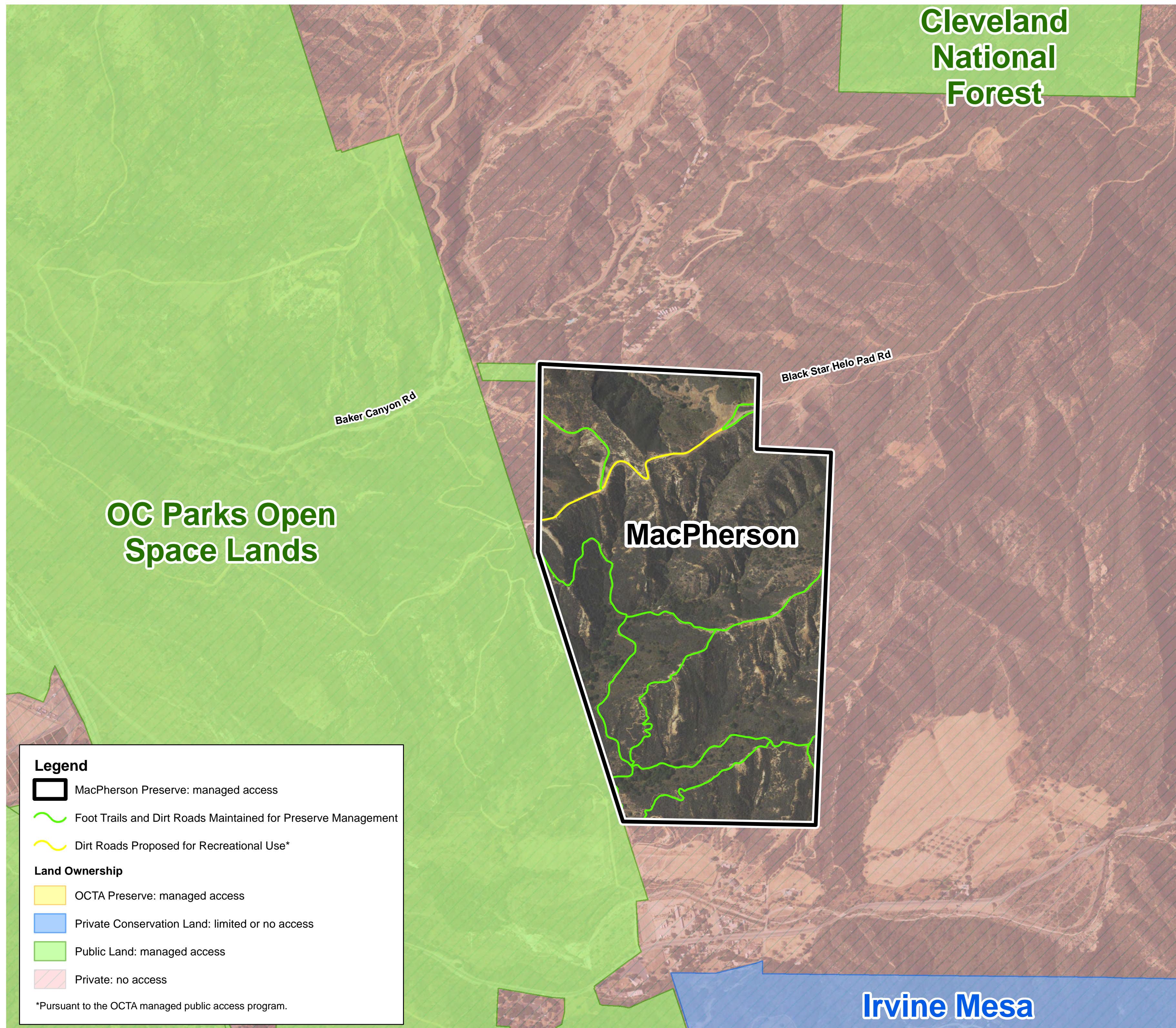
- Docent-led hiking and riding days
- Self-managed community partnership access program

FUTURE PUBLIC ACCESS OPTIONS

- Permit system (TBD)
- Open access days
- Reduced access

PUBLIC ACCESS CHALLENGES

- Preserve adjacent to O'Neill Regional Park and private lands that limit or don't allow public access
- Separated from O'Neill Regional Park by busy rural roads with blind spots (Trabuco Canyon and Live Oak Canyon roads)
- Rural roads with limited vehicle capacity
- Lack of staging areas (parking/restroom facilities)



RMP HIGHLIGHTS

SENSITIVE SPECIES

- Intermediate Mariposa Lily, Coast Horned Lizard, and Orangethroat Whiptail

PROPOSED PUBLIC ACCESS

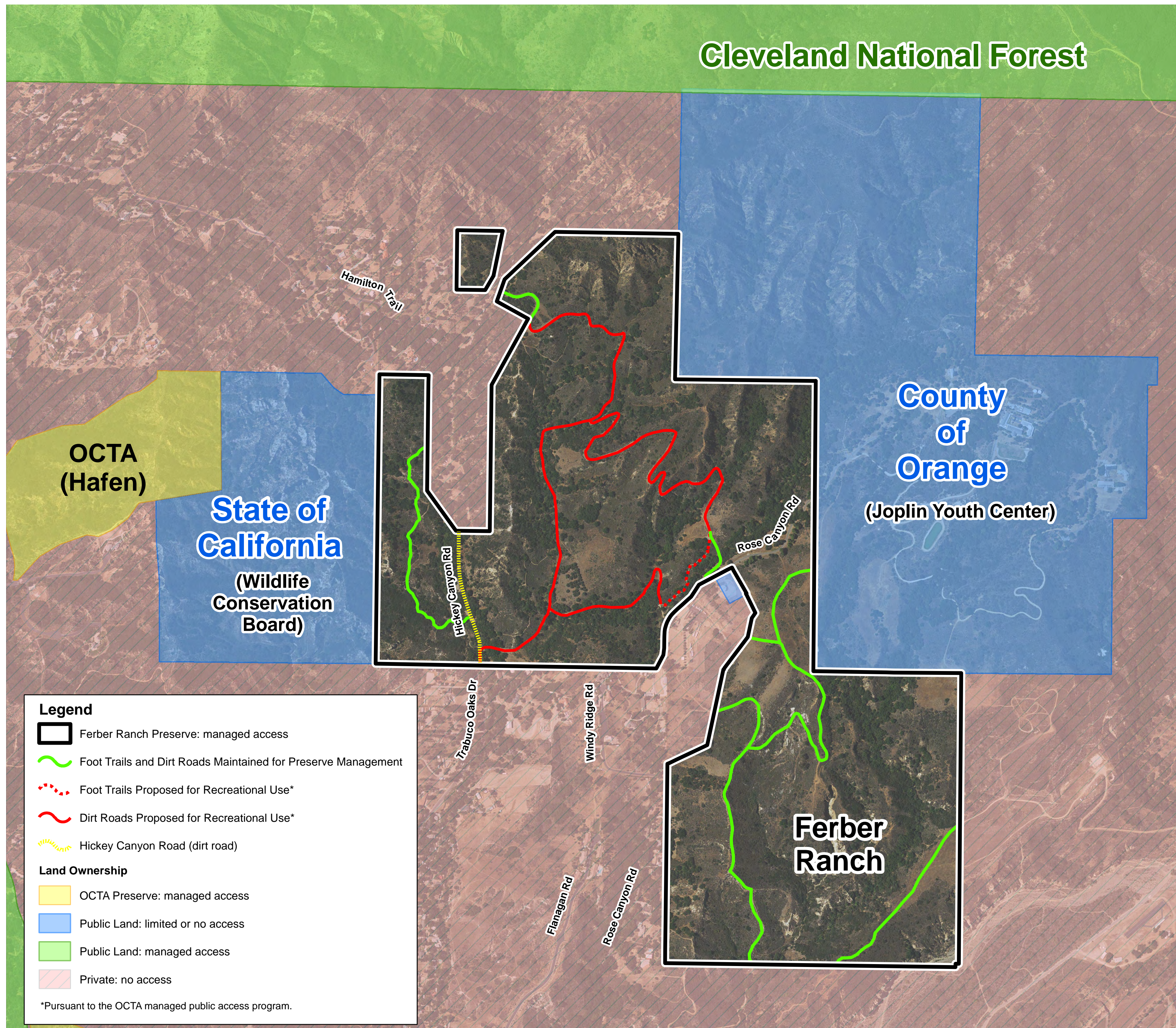
- Coordinate with OC Parks to complement their access program

FUTURE PUBLIC ACCESS OPTIONS

- Docent-led hiking and riding days
- Self-managed community partnership public access program
- Permit system (TBD)
- Open access days
- Reduced public access

PUBLIC ACCESS CHALLENGES

- Surrounded by properties that limit or don't allow public access (OCTA must obtain an "entry permit" from the County to access this Preserve)
- Rural roads with limited vehicle capacity
- Lack of staging areas (parking/restroom facilities)



RMP HIGHLIGHTS

SENSITIVE SPECIES

- Intermediate Mariposa Lily, Coastal California Gnatcatcher, Cactus Wren, and Orangethroat Whiptail

PROPOSED PUBLIC ACCESS

- Docent-led hiking and riding days
- Self-managed community partnership public access program

FUTURE PUBLIC ACCESS OPTIONS

- Permit system (TBD)
- Open access days
- Reduced access

PUBLIC ACCESS CHALLENGES

- Surrounded by properties that limit or don't allow public access
- Rural roads with limited vehicle capacity
- Lack of staging areas (parking/restroom facilities)



MILESTONES AND NEXT STEPS

2014



PUBLIC RELEASE OF CONSERVATION PLAN

The Conservation Plan and Environmental Document were released for a 90-day public review period.

2015



PUBLIC RELEASE OF TRABUCO/SILVERADO CANYON RMPs

The RMPs were released for a 90-day public review period.

2016



REVIEW TRABUCO/SILVERADO CANYON RMPs PUBLIC INPUT

Public comments will be taken into consideration and the RMPs will be finalized.



FINALIZE CONSERVATION PLAN

The U.S. Fish and Wildlife Service, CA Department of Fish and Wildlife (Wildlife Agencies), and OCTA Board of Directors will approve the final Conservation Plan and Environmental Document.



FINALIZE TRABUCO/SILVERADO CANYON RMPs

The Wildlife Agencies will approve the final RMPs.

